

# For Sale

1438 Hay Parkway, Goshen IN



First Floor

1218 sq. ft.

Second Floor

902 sq. ft.

Finished

2120 sq. ft.

Basement

Unfinished

Garage

578 sq. ft. 2 Car

Bedrooms

3

Bathrooms

2 1/2

- ◇ Cabinets by Kountry Cabinets
- ◇ Stainless steel appliances
- ◇ Half wall with wood cap at stairway
- ◇ 9' First Floor Ceilings
- ◇ Walk-in Corner Pantry
- ◇ Optional 4th Bedroom

- ◇ Vinyl siding with stone accents
- ◇ Andersen windows
- ◇ Therma-Tru fiberglass entry door
- ◇ Covered porch entry
- ◇ Basement with egress and rough plumbing
- ◇ Second Floor Office

Home Price: \$ 370,000.00  
 Lot # 221: \$ 32,900.00  
 Landscape/Irrigation: \$ 15,000.00  
 Total Home Price: \$ 417,900.00

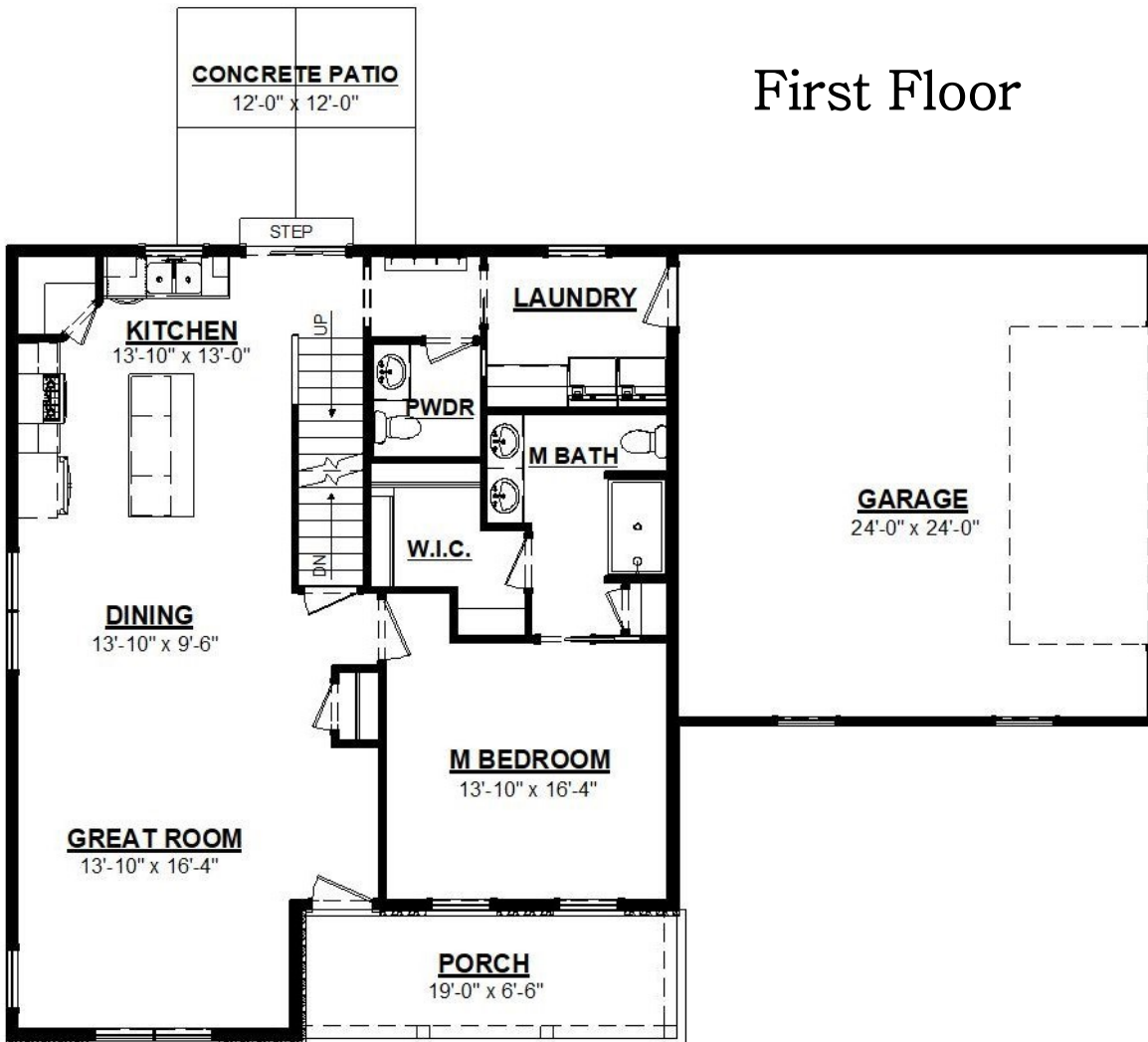
Follow Us On Facebook and Instagram



DESIGN AND QUALITY - A TRADITION

2523 Messick Dr., Goshen IN | 574-534-2706 | SchrockHomes.com

# First Floor



# Second Floor

